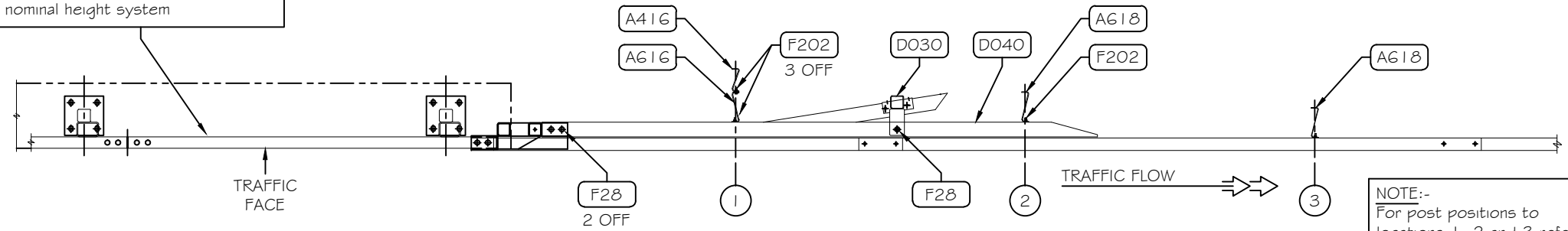
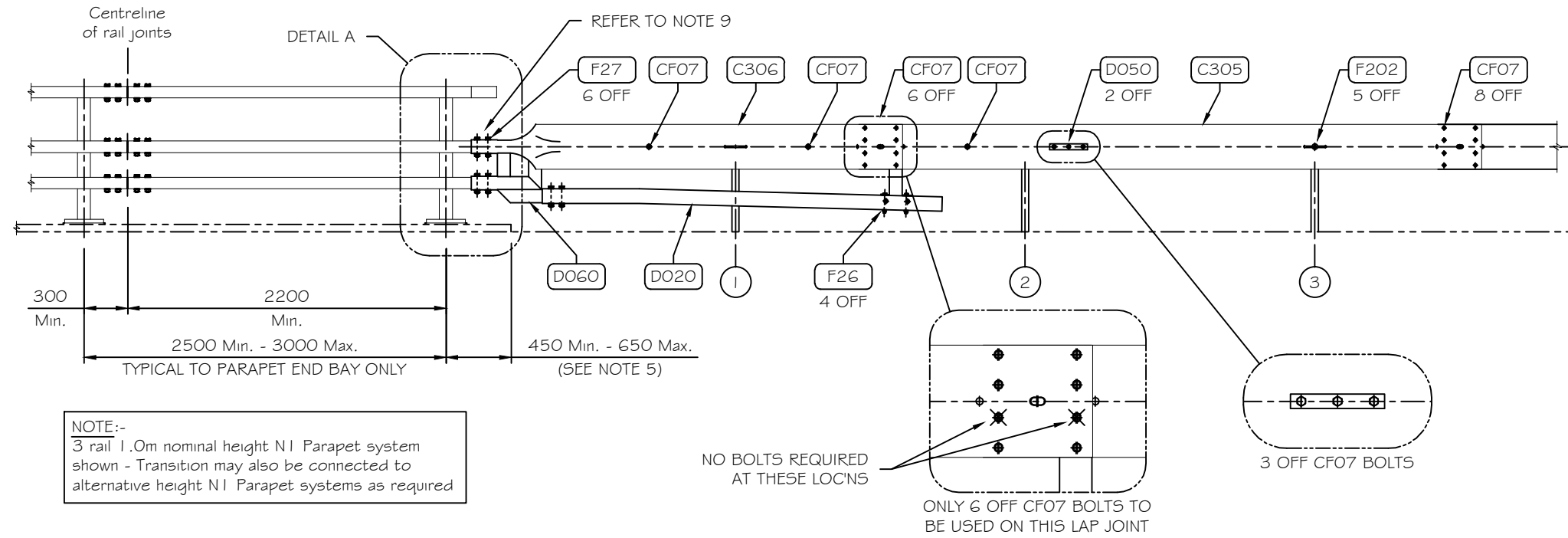


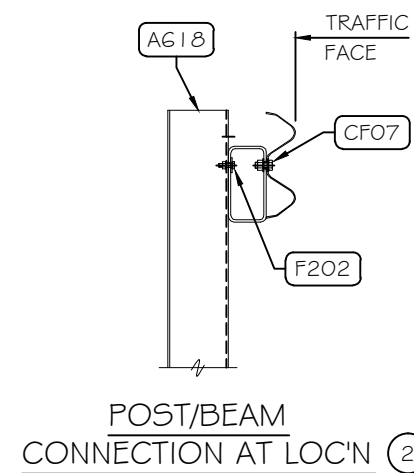
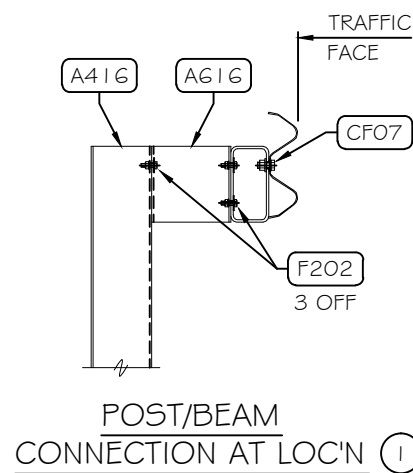
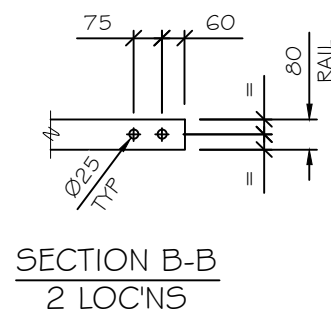
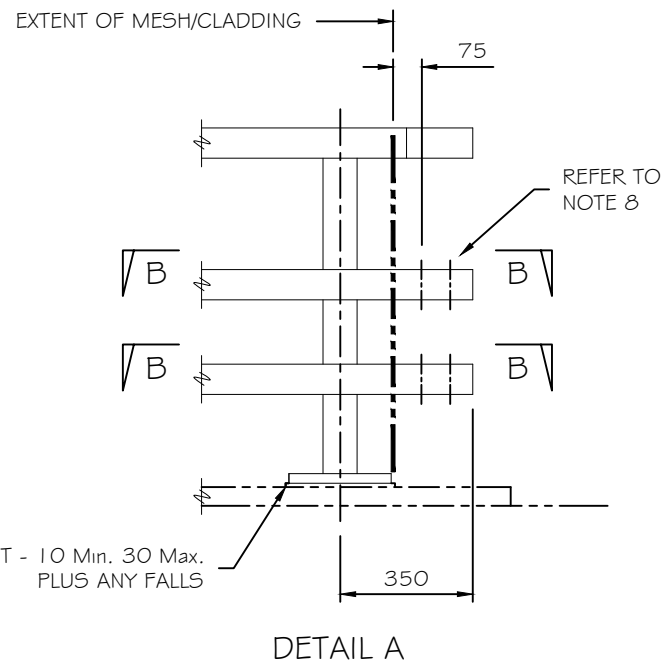
PROTECT 365™ N1 PARAPET
As per Tata Steel drawing number
P365/P/005 - standard 3 rail 1.0m
nominal height system



PLAN ON DEPARTURE END OF PARAPET/SAFETY BARRIER
(AT TOP OF SAFETY BARRIER)



ELEVATION ON DEPARTURE END OF PARAPET/SAFETY BARRIER



	Verge Approach	Verge Departure
VC92C Kicker	DO21	DO20
VC91C Kicker Bracket	DO31	DO30
VC93C Reinforcement Beam	DO41	DO40
VC98C Connector	DO61	DO60
VC59C Tapered Beam	C306	

DO NOT SCALE

Product Code

Tolerances

TATA

Range	Tolerance
0 < 400	± 1
400 < 800	± 2
800 or above	± 3

- NOTES:-
- All dimensions are in mm unless stated otherwise
 - For details of alternative posts, foundations and fixings see drawing numbers VGA02 & VGA03
 - This transition is to connect Vetex N2W2 Safety Barrier to a Protect 365™ N1 parapet only (not suitable for N1 Vertical infill parapet)
 - General layout is symmetrical for Approach and Departures (Departure end as drawn)
 - The first post of the parapet is to be positioned between 450mm and 650mm from the end of plinth
 - The parapet is to be installed in line with Tata Steel installation procedure and guidelines
 - 12m minimum length of Vetex barrier to be installed prior to transition
 - If mesh or cladding is to be fitted to the traffic face of the parapet then it must not interfere with end of tapered beam. Mesh/cladding must be 75mm from nearest hole (refer to Detail A)
 - To ensure correct location of tapered beam and rubbing rail connector, middle and bottom rail, locating holes must be kept in alignment. If in doubt use Ø24 locating pin
 - This drawing to be read in conjunction with drawing number VT102 (Vetex Transition Layout)

Rev.	Description	By	Chk	App	Date
00	Initial release	J.L.L.	R.P.	T.R.M.	May 2016

TATA STEEL

© Tata Steel - This drawing is the copyright work of Tata Steel. It may not be copied (in whole or in part) without the prior written consent of Tata Steel. The designs disclosed in this drawing may be the subject of other intellectual property rights and reproduction of the designs shown in this drawing without the prior written consent of Tata Steel may infringe intellectual property rights

email : cep.sales@tatasteel.com

Vetex™ N2W2SB to
Protect 365™ N1P Transition

VT50

Sheet 1
of 1

00