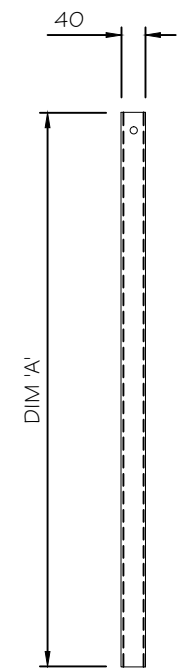
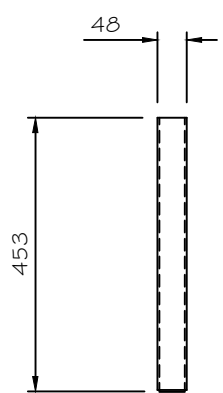


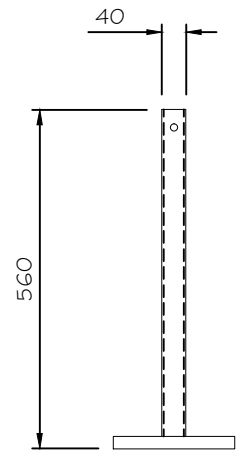
ELEVATION ON TRAFFIC FACE OF BARRIER



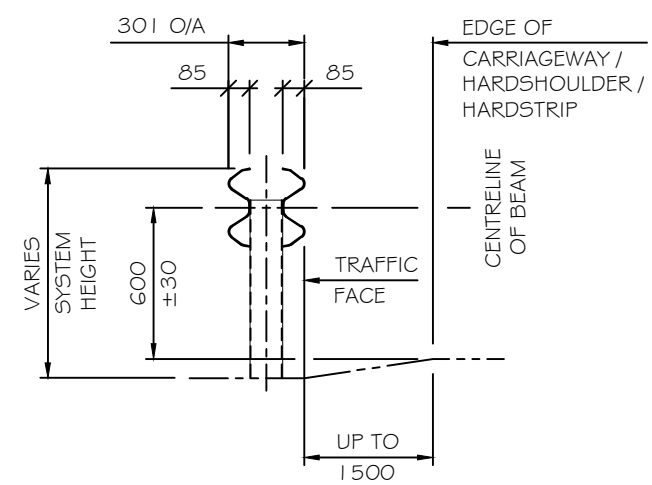
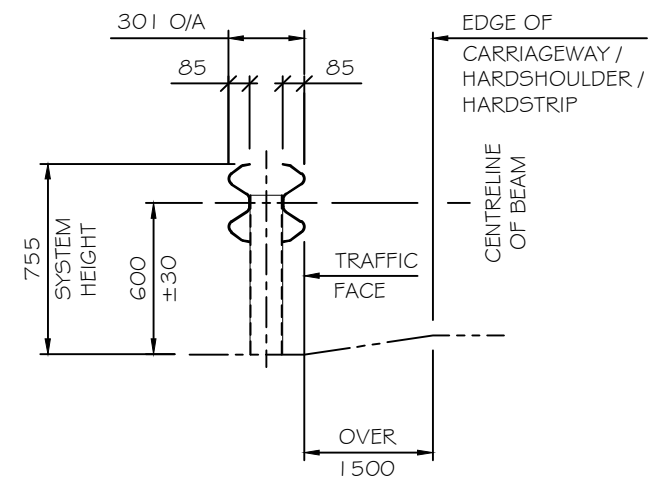
POST



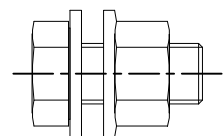
SOCKET P365-F-2 I 2 FOR A8 I 8 POST
WEIGHT: 3.9 Kg



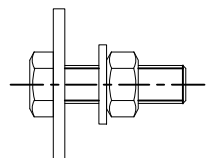
SURFACE MOUNTED POST A837
WEIGHT: 11.9 Kg
(SEE NOTE 7 FOR POST LOADS)



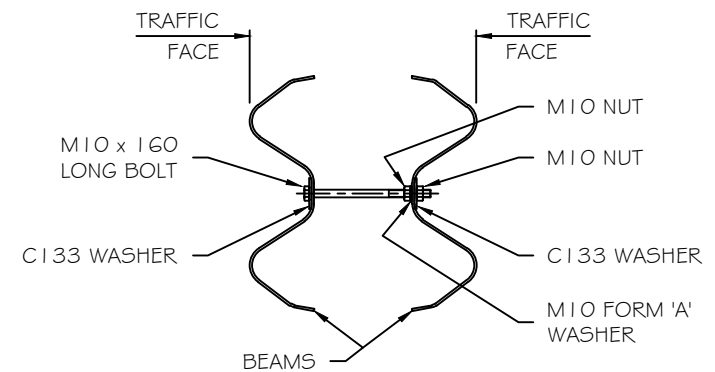
ITEM No.	DIM 'A'	WEIGHT (Kg)	DESCRIPTION
A818	1030	10.6	EXCAVATED / SOCKETED
A855	1830	18.8	STANDARD
A856	2080	21.4	LONG DRIVEN



CF07
M16x35 LAP BOLT ASSEMBLY
WEIGHT: 0.2 Kg



F31
M10x35 BEAM TO POST CONNECTION ASSEMBLY
WEIGHT: 0.1 Kg



TYPICAL BEAM TO BEAM JOINT (F30 ASSEMBLY)
WEIGHT: 0.2 Kg

Rev.	Description	By	Chk	App	Date
01	Components added & notes revised	J.L.L	R.P	T.R.M	Nov' 2016
00	Initial release	J.L.L	R.P	T.R.M	May 2016

TATA STEEL

© Tata Steel - This drawing is the copyright work of Tata Steel. It may not be copied (in whole or in part) without the prior written consent of Tata Steel. The designs disclosed in this drawing may be the subject of other intellectual property rights and reproduction of the designs shown in this drawing without the prior written consent of Tata Steel may infringe intellectual property rights

email : cep.sales@tatasteel.com

Vetex™ N2W2 DS at 3.0m/3.2m post centres