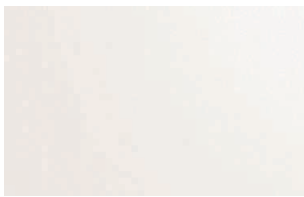




**TATA STEEL**

# Colorcoat® LG

Pre-finished steel for roof and wall cladding



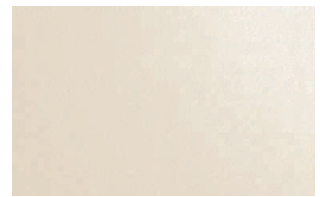
White **CD1** 00E55



Goosewing Grey **CD1** 10A05



Meadowland **CD1** 12B17



Hamlet **CD1** RAL 9002



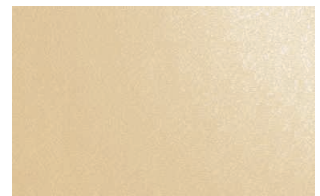
Albatross **CD1** 18B17



Merlin Grey **CD1** 18B25



Moorland Green **CD1** 12B21



Honesty **CD1** 10C31



Wedgewood Blue **CD1** 18C37



Raven **CD2** 18B29



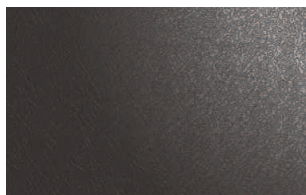
Heritage Green **CD2** RAL 6002



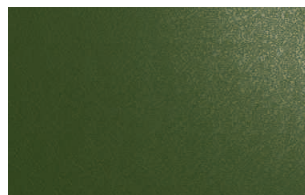
Mushroom **CD1** 10B19



Ocean Blue **CD2** 18C39



Anthracite **CD2** RAL7016



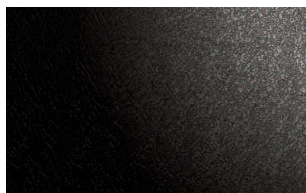
Olive Green **CD1** 12B27



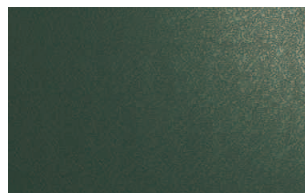
Terracotta **CD2** 04C39



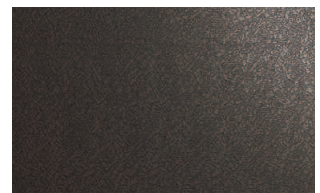
Sargasso **CD2** RAL 5003



Black **CD1** 00E53



Juniper Green **CD2** 12B29



Vandyke Brown **CD2** 08B29

## Notes

1. The standard colour references shown above are the nearest equivalents.
2. The printed colours shown for Colorcoat® LG are for guidance only. For a true representation of colour and effect, please obtain product samples from the Colorcoat Connection® helpline.
3. If an exact match between components and Colorcoat® LG is essential, this is best achieved by matching to the actual cladding delivered to site.

## Colorcoat® LG

Available from Tata Steel (formerly Corus), Colorcoat® LG is a leathergrain plastisol product suitable for roof and wall cladding systems where good performance is required at a competitive price.

- 200µm durable, abrasion-resistant topcoat.
- Comes with leathergrain emboss.
- Available in the most popular colours in standard sizes.
- Galvanised substrate to BS EN 10346:2009 offering good corrosion resistance.
- Available with a performance guarantee up to 25 years including cut edges.
- High performance reverse side backing coat as standard.
- Manufactured in the UK by Tata Steel, who have a proven track record in pre-finished steel.

### Colorcoat® reassurance

The Colorcoat® brand provides the recognised mark of quality and expertise from Tata Steel. Encompassing over 40 years of innovation, strict testing procedures and manufacturing excellence, Colorcoat® provides a range of pre-finished steel products which have been used on countless projects worldwide.

### Product performance

Colorcoat® LG is carefully manufactured in a controlled process to ensure consistent quality.

The use of Colorcoat® LG in aggressive environments is not recommended. For optimum levels of performance, supported by the market leading Confidex® Guarantee, always specify Colorcoat HPS200 Ultra®.

### Guarantee periods

Colorcoat® LG comes with a performance guarantee of up to 25 years, including cut edges. This is made available through the cladding system manufacturer or distributor.

### Colorcoat® LG guarantee cover

Colour Band	Inland		Coastal	
	Walls	Roofs	Walls	Roofs
CD1	25 years	25 years	20 years	20 years
CD2	20 years	15 years	15 years	10 years

#### Notes

1. Guarantee periods quoted are applicable to UK and Ireland only.
2. Figures under coastal heading are buildings within 2km of the sea.
3. Full terms and conditions of the Colorcoat® LG guarantee are on the reverse of the guarantee application form available from Colorcoat® supply chain partners.

### Product testing

To ensure the integrity of Colorcoat® products, Tata Steel uses laboratory tests to measure their performance against corrosion, effect of sunlight, chemicals and abrasion. All testing of products is carried out in accredited laboratories to international standards.

### Typical properties

Colorcoat® LG	Test standard		
Nominal organic coating thickness	(µm)	200	EN13523-1
Gloss (60°)	(%)	15-35	EN13523-2
Scratch resistance	(g)	> 3500	EN13523-12
Abrasion resistance (Taber, 250 rev, 1 kg)	(mg)	< 12	EN13523-16
Flexibility: Reverse impact	(J)	≥ 18	EN13523-5
Adhesion (cross hatch)	(%)	100 Pass	EN13523-6
Minimum bend radius	(T)	0 T@16°C	EN13523-7
Corrosion resistance: Salt spray	(h)	1000	EN13523-8
Humidity	(h)	1000	EN13523-25
Max. continuous operating temp.	(°C)	60	Tata Steel
Reaction to fire		Class 0	BS476 part 6 & 7
Resistance to fire		Class AA	BS476 part 3

#### General notes

The figures contained in this table are typical properties for solid colours and do not constitute a specification. Tata Steel can also provide fire performance data to European Classification standards. These figures relate to the topcoat. For details of test methods see [www.colorcoat-online.com](http://www.colorcoat-online.com)

### Contact details

**Tata Steel**  
 Shotton Works  
 Deeside  
 Flintshire  
 CH5 2NH  
 T: +44 (0) 1244 812345  
[www.colorcoat-online.com](http://www.colorcoat-online.com)

**Colorcoat Connection® helpline**  
 T: +44 (0) 1244 892434  
 F: +44 (0) 1244 892321  
 E: [colorcoat.connection@tatasteel.com](mailto:colorcoat.connection@tatasteel.com)

### Trademarks of Tata Steel UK Limited

Albatross, Colorcoat, Colorcoat Connection, Colorcoat HPS200 Ultra, Confidex, Hamlet, Heritage Green, Honesty, Meadowland and Sargasso are registered trademarks of Tata Steel UK Limited.

Care has been taken to ensure that the contents of this publication are accurate, but Tata Steel Europe Limited and its subsidiaries, (including Tata Steel UK Limited), do not accept responsibility or liability for errors or information that is found to be misleading. Suggestions for, or descriptions of, the end use or application of products or methods of working are for information only and Tata Steel Europe Limited and its subsidiaries accept no liability in respect thereof.

Before using products or services supplied or manufactured by Tata Steel Europe Limited and its subsidiaries, customers should satisfy themselves as to their suitability.

Printed with biodegradable vegetable inks on material sourced from responsible managed forests, certified in accordance with the FSC. Contains 10% recovered fibre, diverting waste from landfill.