



CORUS

Corus Construction and Engineering Products (CEP)

NEW
 Single Sided
Vetex N2W3 @ 2.5m
 Double Sided
Vetex N2W4 @ 5m
 Highways Agency
 Approved

Vetex™ Safety Barrier Systems

Vetex™ Normal Containment Safety Barrier



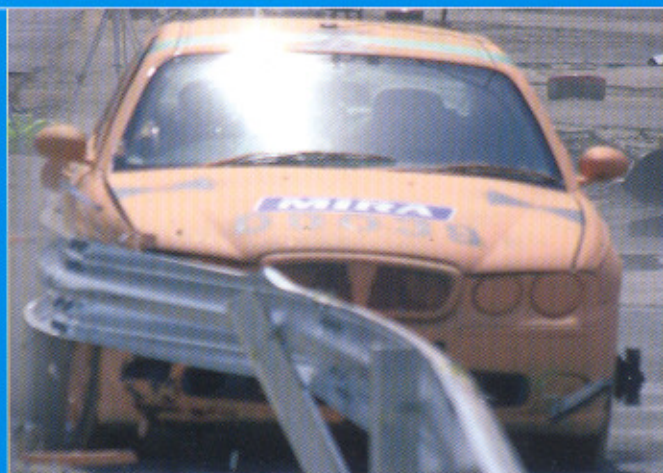
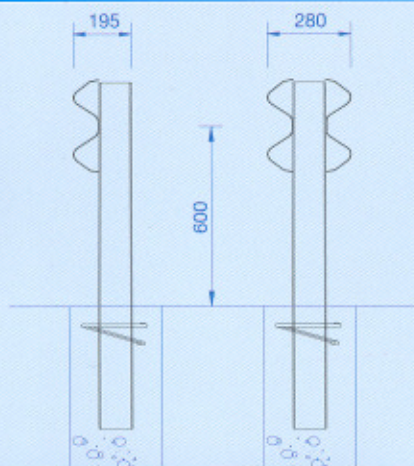
Safety barrier experts Corus, have developed a suite of steel barrier systems for modern highways.

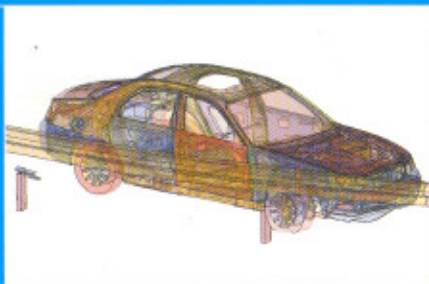
Vetex™ normal containment systems combine safety performance with installation benefits. Vetex™ N2 is an innovative, cost effective solution for safety barrier applications.

- EN1317 accredited
- Untensioned system, suitable for all high speed applications
- Fast and easy to install
- Low maintenance
- Fully compatible with existing UK steel barrier

Specifications

Application	Performance class	Working width	Post spacing (m)	Beam lengths (m)	ASI rating
	N2	W4	2.5	5	A
	N2	W5	5	5	A
Single sided	N2	W2	0.8	4	B
Dual single sided	N2	W2	1.6	4	B
	N2	W4	2	4	A
	N2	W5	4	4	A
Double sided	N2	W3	4	4	A





Application

Vetex™ N2 is suitable for all high speed road applications, where normal containment is required.

Vetex™ N2 provides a **robust solution** for new build projects and can be used with Vetex™ H2 and Vetex™ end terminals, to offer a full barrier system. It has also been specifically designed to **fully integrate** with traditional barriers. This makes Vetex™ effective and efficient for maintenance, repair and barrier extensions.

The **untensioned** assembly can be used in all current tensioned corrugated beam (TCB) and open box beam (OBB) applications, including small radii bends and off road applications.

Installation and maintenance

As an untensioned system, Vetex™ N2 represents an evolution in performance and reliability over traditional TCB and wire rope systems.

Installation is faster and simplified, with **increased post spacing** and **longer beams** creating **installation efficiencies** compared to traditional systems. Maintenance is greatly reduced, because routine re-tensioning is not required.

Vetex™ is the first barrier system to offer a 5m beam solution for the popular N2W4 and N2W5 specifications. Combined with the wide 2.5m and 5m post spacing, the 5m beam significantly reduces foundation work, while distance is covered efficiently. Vetex™ beams are

engineered to work with the post spacings, with long slots positioned to align with the Vetex post. This reduces marking out and enables single person installation. In addition, this unique, tailored design means that posts are never bolted to the beam joint. Installing Vetex™ is fast, simple and highly cost effective.

Vetex™ has been designed with **familiar components** so minimal installation training is needed. Vetex™ can be integrated with existing runs and all Vetex™ components are clearly stamped for **easy identification** on site. LANTRA approved training schemes are available for all Corus safety barrier systems.

Vetex™ N2 has been designed to yield major installation and maintenance benefits, offering a **cost effective** barrier solution, without compromising safety performance.

Expert design and engineering

Corus uses advanced computer simulation technology to predict the behaviour of barriers and modern vehicles in various impact scenarios. Corus barrier systems have been subjected to rigorous physical testing using modern vehicles and have been developed to meet the demanding requirements of EN1317.

This innovative and thorough approach to barrier development means that Corus has an in-depth understanding of impact behaviour. This knowledge has enabled Corus to design Vetex™, an **evolutionary untensioned system**, which combines installation benefits with high safety performance.

Corus. Driving Safety Forward.

Also available in the Vetex™ range:

Vetex™ P1 End Terminal

Vetex™ H2 Barrier

saferoads@corusgroup.com

www.corusconstruction.com/saferoads

Corus CEP
Llanwern Works
Newport
South Wales
NP19 4QZ

T +44 (0) 1633 290011
F +44 (0) 1633 464508