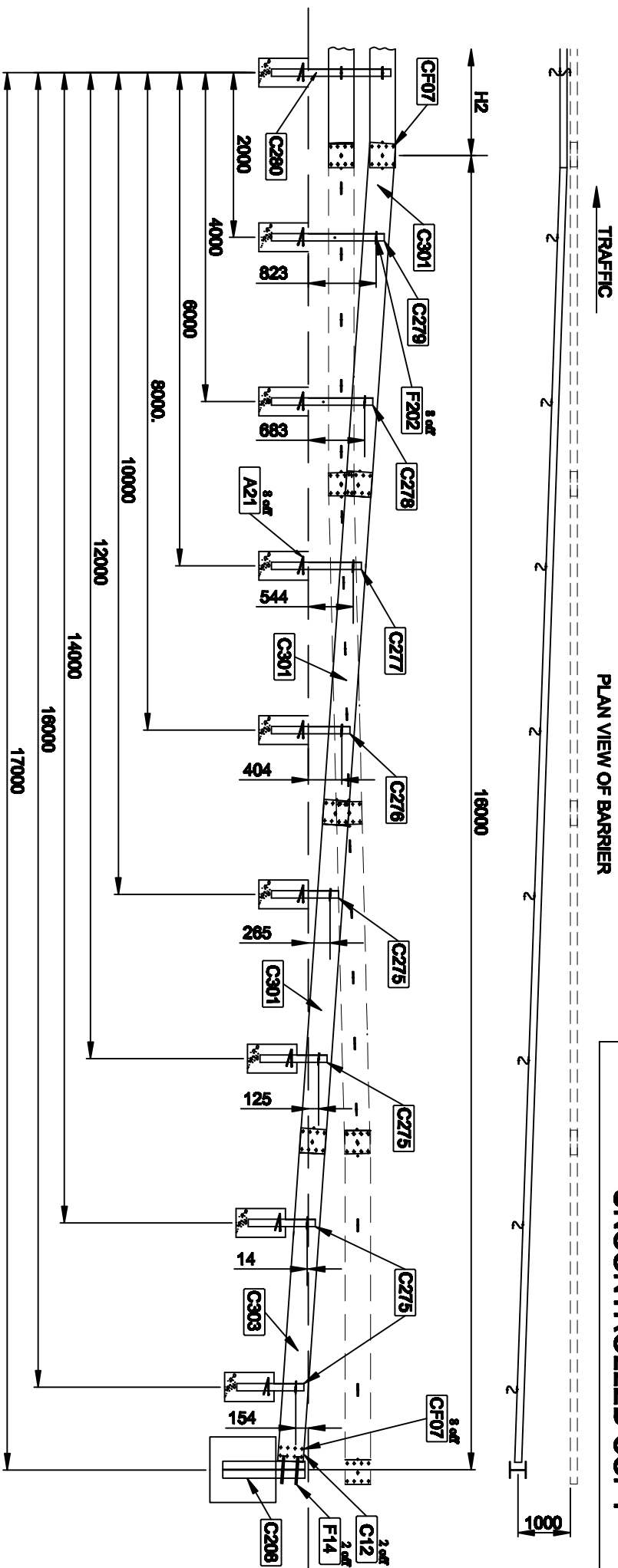
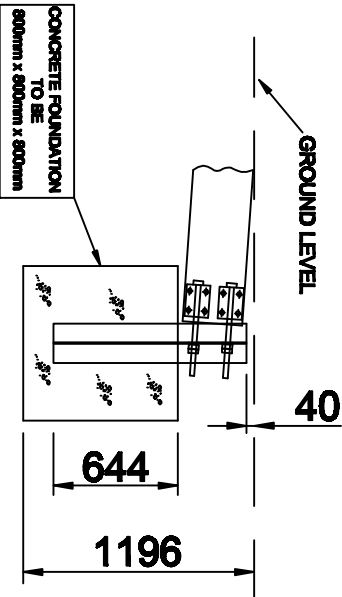


PLAN VIEW OF BARRIER



- NOTES:**
1. FOR ALTERNATIVE POST AND FOUNDATION OPTIONS SEE DRAWING VH4 & VH5.
  2. FENCE ASSEMBLY SHOWN IS FOR USE IN VERGE ASSEMBLY - CENTRAL RESERVE IS THE SAME BUT HAS REVERSED POST ORIENTATION.
  3. CONCRETE MIX TO BE C25 OR ST5.
  4. WHERE A KERB IS REQUIRED PREFERRED HEIGHT IS 75mm. MAXIMUM KERB HEIGHT IS 125mm.
  5. POSTS FOR LOWER BEAM NOT SHOWN FOR CLARITY.
  6. GENERAL LAYOUT IS SYMMETRICAL FOR APPROACH AND DEPARTURE ENDS



Notes:

Rev No	Revision Notes	Rev. Date	By
1	Drawing re-dimensioned	11/1/2008	R.P

**Corrus Distribution & Building Systems**  
**CORUS CEP, LLANWERN WORKS**  
 NEWPORT, S. WALES, UK, NP19 4QZ  
 Tel: +44 (0) 1633 290011 Fax: +44 (0) 1633 464508  
 email: safeword@corrusgroup.com  
 © Corrus

<b>DESCRIPTION</b>	VETEX H2 BARRIER UPPER BEAM ANCHORAGE - CONCRETED		
<b>CUSTOMER</b>	Vetex		
<b>PRODUCT</b>	Vetex		
<b>DATE</b>	05/06/05		
<b>DRAWN</b>	MAH	CHECKED	AMR
<b>SCALE</b>	NTS		
<b>DRG. No.</b>	VHS		SH. REV. 1 1