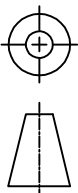


- NOTES:
1. DIMENSIONS ARE IN MILLIMETRES
  2. TOLERANCES AS DETAILED IN TOLERANCE BOX, UNLESS OTHERWISE STATED.
  3. REMOVE ALL BURRS AND SHARP EDGES
  4. DURABLY MARK MANUFACTURE'S IDENTIFICATION AND DATE

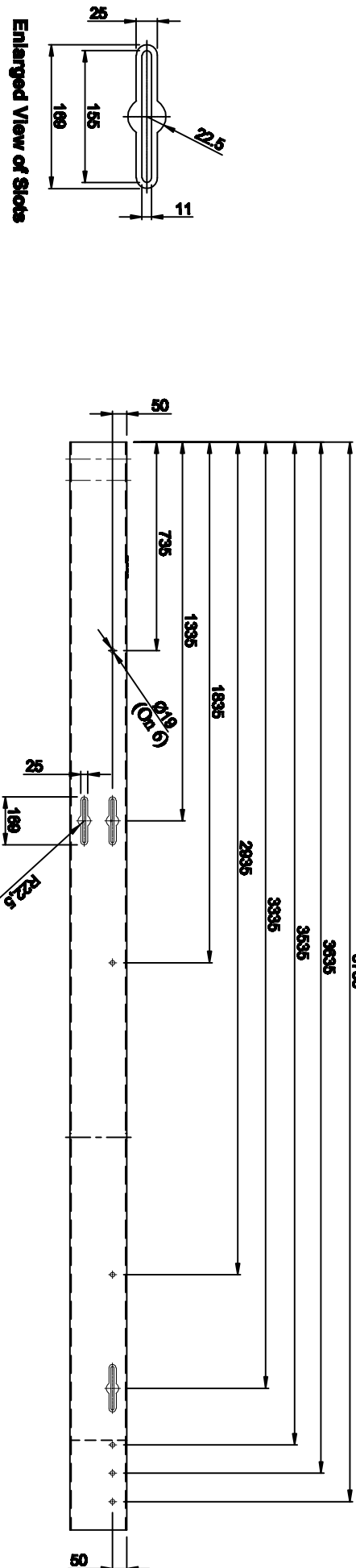
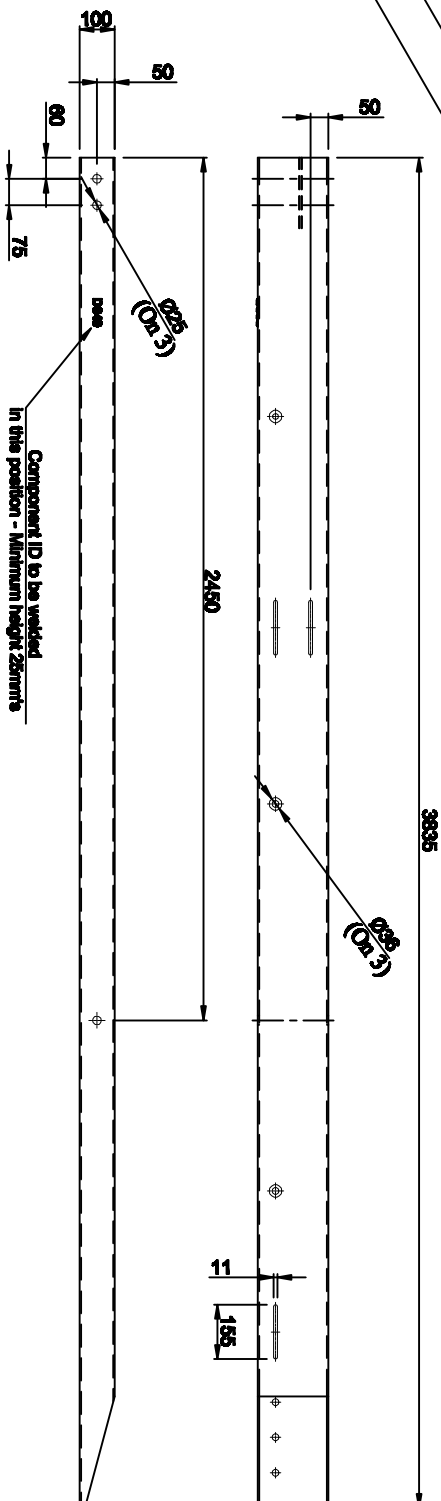
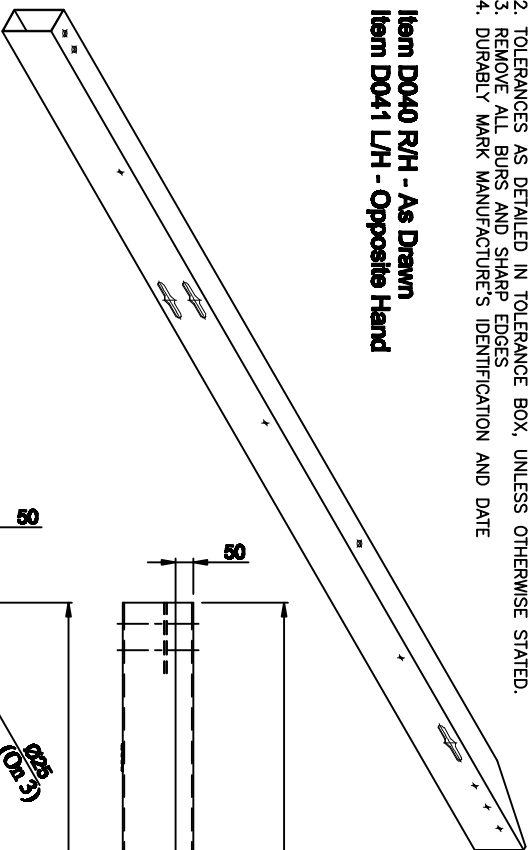
**STAMP DETAIL**

**D040  
D041**

TOLERANCE BOX	
RANGE	TOLERANCE
0 LESS THAN 400	-0 +2.0
400 LESS THAN 800	-0 +4.0
MORN THAN 800	-0 +6.0



**Item D040 R/H - As Drawn  
Item D041 L/H - Opposite Hand**



**Corus Distribution  
& Building Systems**

CORUS CEP, LLANWERN WORKS  
NEWPORT, S. WALES, UK, NP19 4QZ

**CORUS**

Sales tel: +44 (0) 1633 290011 Fax: +44 (0) 1633 464508  
Technical tel: +44 (0) 1633 752100 Fax: +44 (0) 1633 464508  
© Corus email: safesound@corusgroup.com

**Notes:**

**MATERIAL:**

**GAUGE:**  
GALVANISED

**MODELS**  
**D040 & D041**

DESCRIPTION	REINFORCEMENT BEAM
CUSTOMER	
PRODUCT	VETEX
DATE	29/01/08
DRAWN	RP CHECKED
SCALE	NTS

DRG. No.

**VC93C**

SH. REV.

**1 0**