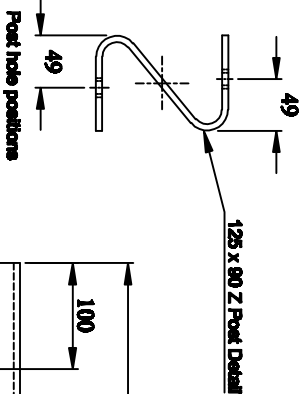


TOLERANCE BOX

RANGE	TOLERANCE
0 LESS THAN 400	+2.0 -0
400 LESS THAN 800	+4.0 -0
MORE THAN 800	+6.0 -0

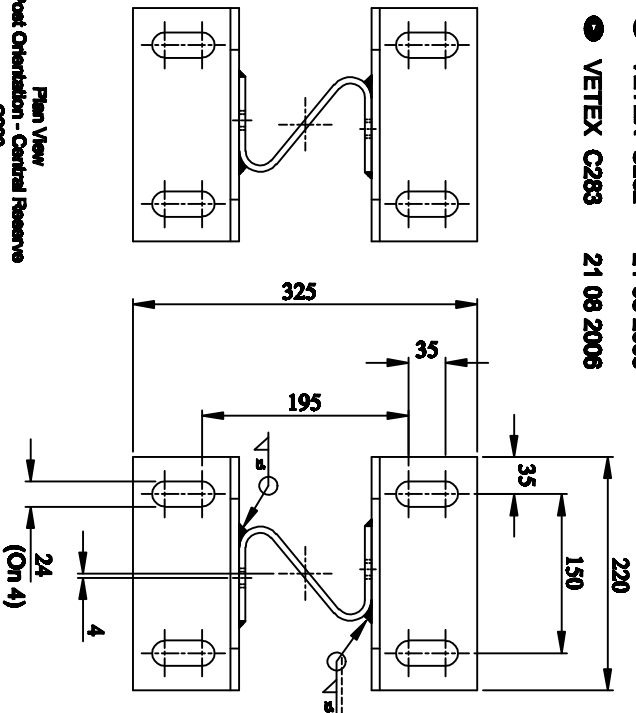
NOTES:

1. WELD DETAILS TO BS EN 22 553
2. REMOVE ALL BURRS AND SHARP EDGES.
3. DURABLY MARK MANUFACTURERS IDENTIFICATION AND DATE (DAY MONTH & YEAR e.g. 21 08 2006).



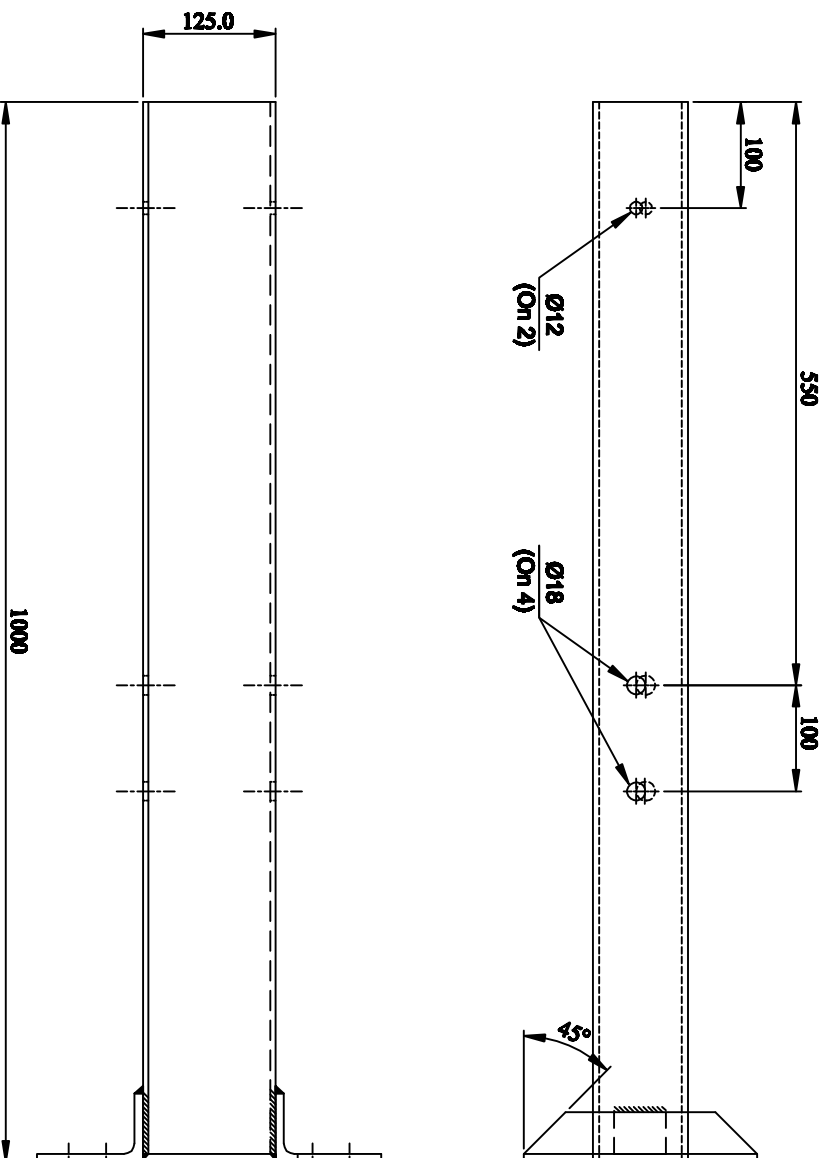
TYPICAL STAMP DETAIL

- VETEX C282 21 08 2006
- VETEX C283 21 08 2006



Plan View
Post Orientation - Central Reserve
C283

Plan View
Post Orientation - Verge
C282



Rev No	Revision Notes	Rev. Date	By
5	Unlocked material dimensions shown on drawing, 8 mm dimension added.	09/11/08	R.P
4	Drawing redrawn and renumbered	21/09/08	R.P

SURFACE MOUNTED POST (H2 SERIES)

DESCRIPTION
CUSTOMER

PRODUCT

DATE

DRAWN

SCALE

DRG. No.

SH. REV.

Corus Distribution
& Building Systems

CORUS CORP, ILLANWERN WORKS
NEWPORT, S. WALES, UK, NP19 4QZ

Models
C282 / C283

FINISH
GALVANISED

MATERIAL



COFUS

Sales tel: +44 (0) 1633 290011 Fax: +44 (0) 1633 464508
Technical tel: +44 (0) 1633 752100 Fax: +44 (0) 1633 464508
© Corus email: safecodes@corusgroup.com

VC24C

1 5