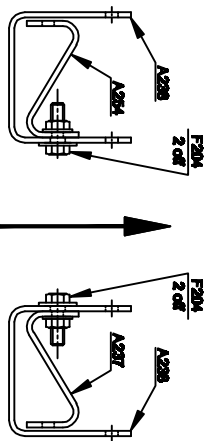
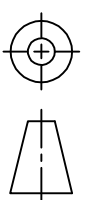


TOLERANCE BOX	
RANGE	TOLERANCE
0 LESS THAN 400	+2.0 -0
400 LESS THAN 800	+4.0 -0
MORE THAN 800	+6.0 -0

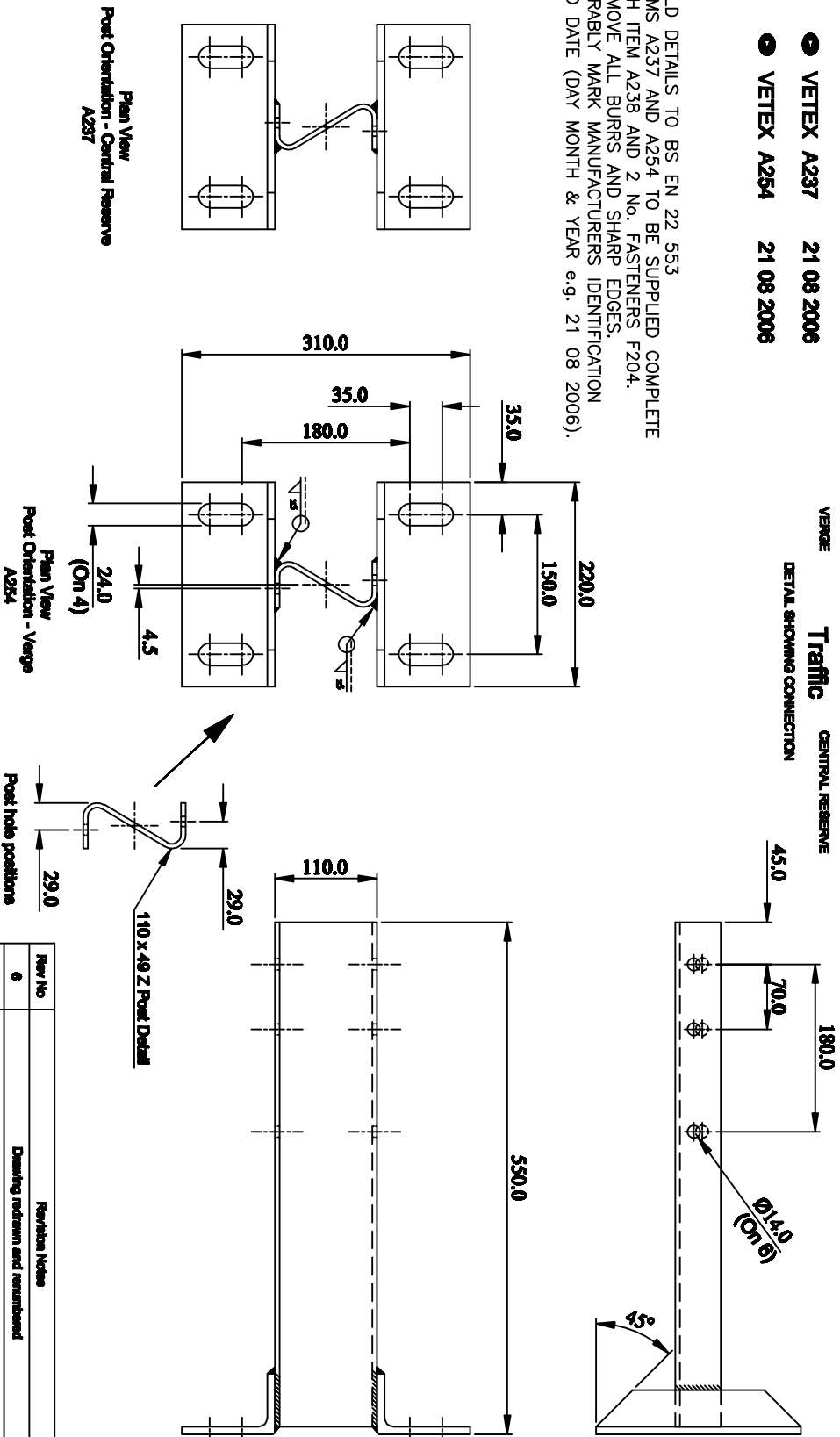


TYPICAL STAMP DETAIL

- VETEX A237 21 08 2006
- VETEX A254 21 08 2006

NOTES:

1. WELD DETAILS TO BS EN 22 553
2. ITEMS A237 AND A254 TO BE SUPPLIED COMPLETE WITH ITEM A238 AND 2 NO. FASTENERS F204.
3. REMOVE ALL BURRS AND SHARP EDGES.
4. DURABLY MARK MANUFACTURERS IDENTIFICATION AND DATE (DAY MONTH & YEAR e.g. 21 08 2006).



Rev No	Revision Notes	Rev. Date	By
6	Drawing redrawn and resubmitted	20/09/08	R.P
5	Extra bolt end slot shown	06/09/08	R.J

Corus Distribution & Building Systems



CORUS CORP, ILLANWERN WORKS
NEWPORT, S. WALES, UK, NP19 4QZ

Models

A237 / A254

FINISH GALVANISED
MATERIAL

DESCRIPTION SURFACE MOUNTED POST

CUSTOMER

PRODUCT

DATE

DRAWN

SCALE

VETEX

01/09/04

MAH CHECKED MRL

NTS

DRG. No. SH. REV.

VC20C 1 7

Sales tel: +44 (0) 1633 290011 Fax: +44 (0) 1633 464508
Technical tel: +44 (0) 1633 752100 Fax: +44 (0) 1633 464508
Corus email: safecodes@corusgroup.com