

TATA STEEL



Solar PV Mounting Systems



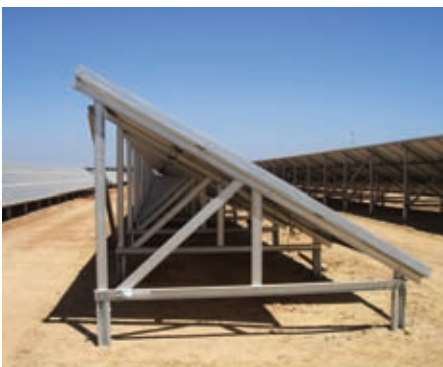
ENERGY



Harness the
sun's natural
energy to
produce
power

SOLAR PV MOUNTING SYSTEMS

Tata Steel Construction Products have developed a system of solar PV mounting frames, expertly designed for a lightweight solution that can be easily installed on site.



Our systems have been developed in partnership with ScrewFast Foundations Ltd, one of Europe's leading foundation designers. The product is manufactured to customer specifications using lightweight strong steel sections making it significantly more competitive than aluminium.

System Features

- Low cost & high performing structure for mounting solar modules
- Fast & simple to assemble
- Panels are pushed-in
- No nuts and bolts for panel mounting required
- Ultra-light – thanks to its modular section
- Designed for up to 250km/h wind speed and for at least 150kg/m² snow load
- Galvanised steel to EN1461/ EN10346
- Up to 25 years material warranty

Instead of bolting the solar panels into place, the Tata Steel designed steel sections allow them to be fed in from either end and pushed into place for efficient site assembly.

To date, our solar PV frames have been successfully installed in Spain, Germany and France, supporting over 20MW of capacity, more projects across Europe are in the development stages.

Our technology and design centre is working on further developments to accommodate any type of panel to be mounted quickly and safely to the support structure as well as industrial roof mounting systems.

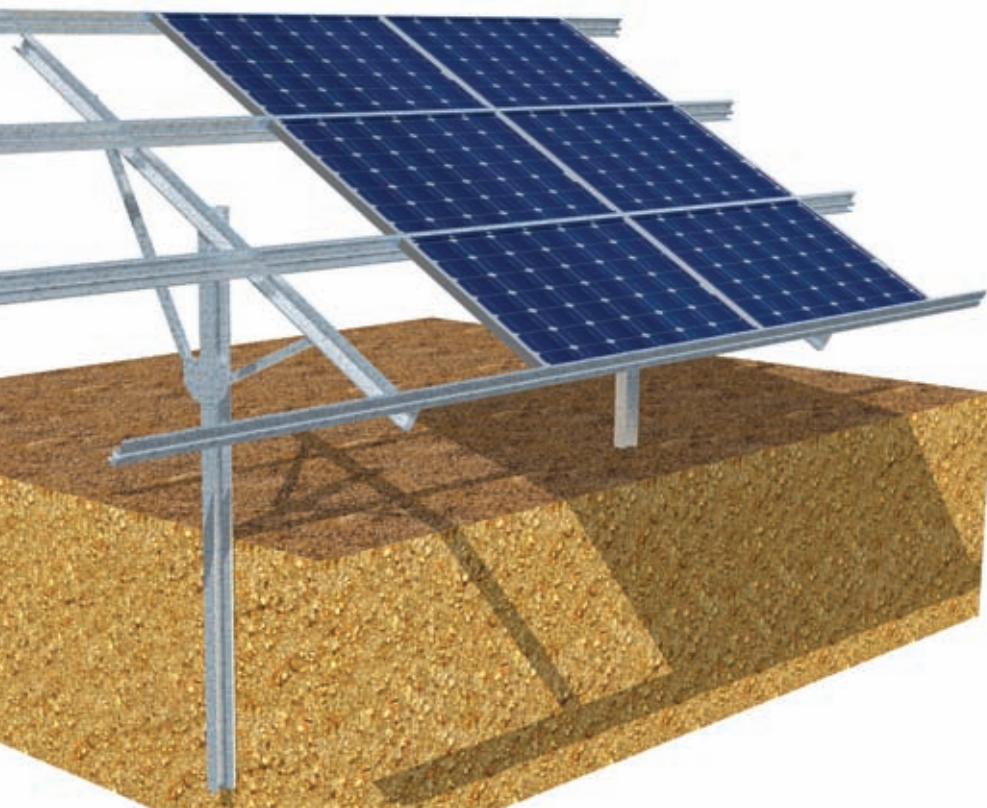
The structures can be anchored into any ground conditions and are designed to withstand up to 250km/h wind speed and at least 150kg/m² snow load.

All sections have a hot dip galvanised coating with up to 25 years material warranty depending on geographical location and conditions.

As the foundations can be driven into the ground, installation is not only faster, it is more cost effective than concrete.

Each PV support frame can be modified for the specific module dimensions and to the correct angle required for the geographic location. A simple but effective theft protection system is included to secure your assets.

We can provide full engineering support and simulation consultancy from the early design stages to the completed installation.





Getting the design right

Tata Steel Construction Products work closely with customers throughout every aspect of the product design and installation to ensure exact requirements are met. Each project is unique and every element is taken into consideration before developing individual systems, including:

- Panel dimension and type
- Panel power output (Wp) and positioning
- Environmental and ground conditions
- Latitude and altitude of site
- GPS location of site
- Site access and planning restrictions



About Tata Steel Construction Products

Tata Steel Construction Products, based in South Wales, United Kingdom, is part of the Tata Steel Group, Europe's second largest steel producer with annual revenues of around £12 billion and a crude steel production of over 20 million tonnes.

Tata supplies steel and related services to the construction, automotive, packaging, mechanical engineering and other markets worldwide.

With innovation and continuous improvement at the heart of what we do, we have the knowledge and expertise to design, manufacture and supply a multitude of products direct to the construction and civil engineering industry.

Tata Steel is one of the world's top ten steel producers. The combined enterprise has an aggregate crude steel capacity of more than 28 million tonnes and approximately 80,000 employees across four continents.



To find out how we can help you contact us at:

Tata Steel Construction Products -

T: +44 (0)1633 464 116

www.tatasteelcp.com



www.tatasteel.com

While care has been taken to ensure that the information contained in this brochure is accurate, neither Tata Steel Europe Limited nor its subsidiaries accept responsibility or liability for errors or information which is found to be misleading.

Tata Steel Construction Products

Llanwern Works

Newport

South Wales,

NP19 4QZ

United Kingdom

T: +44 (0) 1633 290011

F: +44 (0) 1633 464508

E: solar@tatasteel.com

www.tatasteelcp.com